

## [HOW TO CONFIGURE YOUR DG-HR1400 FOR INTERNET ACCESS](#)

### STEP 1: ACCESSING THE WEB CONFIGURATION PAGE INSIDE THE ROUTER

Open the configuration page of the router by typing <http://192.168.2.1> in a web browser. We recommend this one time configuration to be done using [Internet Explorer](#).

Enter the username as [admin](#) and password as [1234](#) and click on Login



## STEP 2: CONFIGURE THE ROUTER IN PPPOE MODE

Click on [Setup > Internet Setup](#)

Under [WAN Interface](#) > Select WAN Access Type as **PPPoE**

Enter **Username** and **Password** provided by the ISP

The screenshot shows the web interface of a DG-HR1400 router. The browser window is titled "DG-HR1400 - Windows Internet Explorer" and the address bar shows "http://192.168.2.1/index.htm". The router's logo "DIGISOL" and model "DG-HR1400" are visible at the top, along with "150Mbps Wireless Broadband Router". The navigation menu includes "Setup", "Wireless", "Advanced", "Maintenance", "Status", and "Help". The "Setup" menu is expanded to show "Wizard", "Local Network", "Internet Setup", "IPv6", and "Mode Settings". The "Internet Setup" page is titled "WAN Interface Setup" and contains the following fields and options:

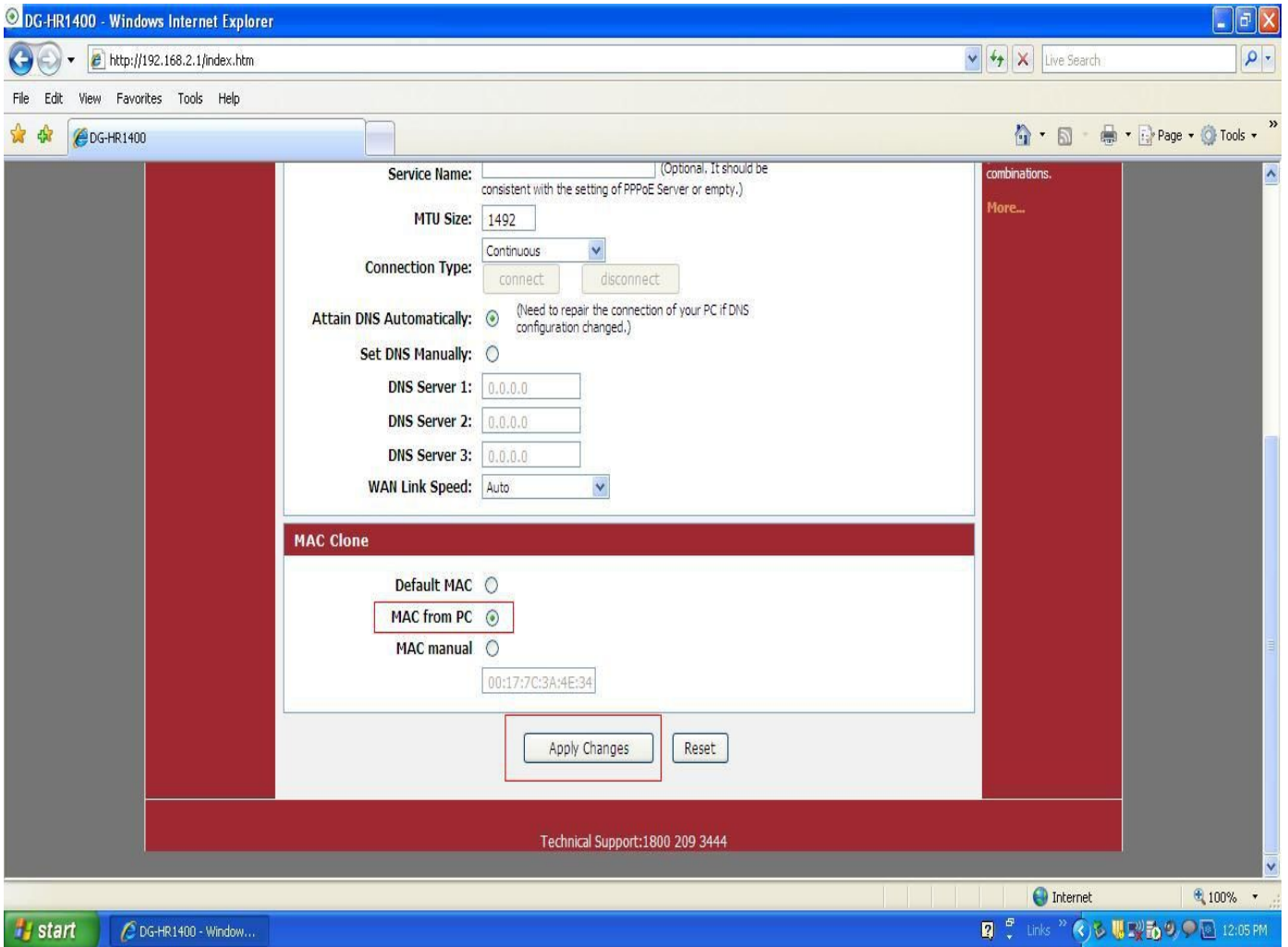
- WAN Access Type:** A dropdown menu set to "PPPoE".
- User Name:** An empty text input field.
- Password:** An empty password input field.
- Service Name:** An empty text input field with a note: "(Optional. It should be consistent with the setting of PPPoE Server or empty.)"
- MTU Size:** A text input field containing "1492".
- Connection Type:** A dropdown menu set to "Continuous".
- Connection Type buttons:** "connect" and "disconnect" buttons.
- Attain DNS Automatically:** A radio button that is selected, with a note: "(Need to repair the connection of your PC if DNS configuration changed.)"
- Set DNS Manually:** An unselected radio button.
- DNS Server 1:** A text input field containing "0.0.0.0".
- DNS Server 2:** A text input field containing "0.0.0.0".
- DNS Server 3:** A text input field containing "0.0.0.0".

On the right side of the page, there is a "Helpful Hints..." section with the following text: "When configuring the router to access the Internet, be sure to choose the correct Access Type from the list below. Please take care when entering your User name and password as these are case sensitive. The majority of connection issues are caused by incorrect User name or password combinations. More..."

The Windows taskbar at the bottom shows the Start button, a taskbar with "DG-HR1400 - Window...", and the system tray with the time "11:14 AM" and "Internet" connection status.

Under **MAC Clone** > Select **MAC From PC**

Click on **Apply Changes**



### STEP 3: CHECKING INTERNET ACCESS

Click [Status > Device Info >](#) If you are successfully connected to the internet, you will get numbers like 114.35.54.56 etc .Under [WAN Configuration >](#) Inside the [IP Address](#) and [Gateway](#) sections.

The screenshot displays the configuration page for a DG-HR1400 router. The browser window shows the URL <http://192.168.2.1/index.htm>. The page content includes:

- IP Address Configuration:**

IP Address	192.168.2.1
Subnet Mask	255.255.255.0
DHCP Server	Enable
MAC Address	00:17:7C:3A:4E:33
- WLAN Configuration:**

Wireless	Enabled
Mode	AP
SSID	DIGISOL
Encryption	None
Channel	6
Broadcast SSID	Enabled
WPS	Enabled
Repeater Status	Disconnected
- WAN Configuration:**

Interface	Protocol	IP Address	Gateway	DNS	Status
WAN	DHCP	0.0.0.0	0.0.0.0	0.0.0.0	Link Down(DHCP Client)

Refresh

Technical Support:1800 209 3444

Now verify the internet access through DG–HR1400 router.